

The Fastener Specialist

Your Construction Supply Specialist

Reg Number: 2018/378047/07 (Pty.Ltd)

PRODUCT CATALOGUE

Build Tomorrow, Today

2022

Contact us:



+27(0) 76 303 5130



fastenerspecialist.co.za



admin1@fastenerspecialist.co.za



Shop 2&3, Delmont Centre,
North Reef Road, Corner Atlas
Road, Elandsfontein, Johannesburg,
South Africa, 1406

Follow us on:



INDEX

Rawlplug Fixings

Bonded Anchors
Mechanical Anchors
Lightweight Fixings
Insulation Fixings
Screws
Fastening Systems
Foams

Sikla

Insulated Pipe Clamps

T.F.S Fasteners

Bolts
Cap Screws
Nuts
Washers
Threaded Rod
Foundation Bolts
Pigtail Bolts
U-Bolts
Hook Bolts
Eye Bolts
Forged Eye Nuts and Bolts
Clamps
Mechanical Anchors
Lightweight Fasteners
Screws
Pop Rivets
Nails

T.F.S Grouts and Bonding Agents

Balu-Grout
Bonding Agent
A.B.E Dura.grout

Liquid Rubber Waterproofing

Liquid Rubber
Rust Remover

Olivé & Akfix Silicones and Adhesives

Silicones
Polyurethane
Adhesives

Somta Tools

Drill Bits
Taps and Dies
Slugger Bits

Javelin Drilling and Cutting

Drill Bits
Core Drill Barrels
Chisels
Bits
Hole Saws
Diamond Blades and Wall Saw Blades
Grinding Wheels
Flap Discs
Wire Cup Brushes
TCT Blades

Pg. 1

Pg. 2-3
Pg. 3-6
Pg. 7-8
Pg. 8-9
Pg. 9

Pg. 9

Pg. 10

Pg. 11

Pg. 12

Pg. 13

Pg. 14-15

Pg. 16

Pg. 16-18

Pg. 18-20

Pg. 20-21

Pg. 21

Pg. 22

Pg. 22

Pg. 22

Pg. 22

Pg. 23

Pg. 23

Pg. 24

Pg. 24-25

Pg. 25-29

Pg. 29-30

Pg. 30

Pg. 31

Pg. 32

Pg. 33

Pg. 33

Pg. 34

Pg. 35-36

Pg. 36

Pg. 37

Pg. 38

Pg. 38

Pg. 39

Pg. 40

Pg. 41-44

Pg. 44-45

Pg. 45

Pg. 46

Pg. 47

Pg. 47

Pg. 48

Pg. 48

Pg. 49

Pg. 49

Pg. 49

Pg. 50

Pg. 50

Pg. 50

Karbosan Abrasives

Cutting Discs
Grinding Discs
Flap Discs
Resin Fibre Sanding Discs

Rhodium Abrasives

Cutting Discs
Grinding Discs
Flap Discs

Pferd Abrasives

Cutting Discs
Grinding Discs
Flap Discs
Cup Wheels and Wire Brushes
Scratch Brushes
Resin Fibre Sanding Discs

Bosch Power Tools

Battery Operated Power Tools
Corded Power Tools

Makita Power Tools

Battery Operated Power Tools
Corded Power Tools

Metabo Power Tools

Battery Operated Power Tools
Corded Power Tools

Ingco Power Tools

Battery Operated Power Tools
Corded Power Tools

Petrol Machines

Air Compressors

Air Tools

Ingco Hand Tools

Hand Tools
Measuring Tools
Trowels
Paint Brushes
Tool Sets and Boxes

Ryobi Welding

Welding Inverters

Maxweld & Thermamax Welding

Welding Inverters
Welding Accessories

Jaweld, Smarter, Parker Welding

Welding Inverters
Welding Accessories

Welding Helmets

PPE

Head and Ear Protection
Eye Protection
Hand Protection
Overalls
Harnesses
Safety Boots

Contact Details

Pg. 51

Pg. 52
Pg. 52
Pg. 52
Pg. 52

Pg. 53

Pg. 54
Pg. 54
Pg. 54

Pg. 55

Pg. 56
Pg. 56
Pg. 56-57

Pg. 57

Pg. 58

Pg. 58

Pg. 59

Pg. 60

Pg. 60

Pg. 61

Pg. 62

Pg. 62

Pg. 63

Pg. 64

Pg. 64

Pg. 65

Pg. 66-68

Pg. 69-71

Pg. 71-72

Pg. 72

Pg. 72-73

Pg. 74

Pg. 75-86

Pg. 86-87

Pg. 88

Pg. 88-90

Pg. 91

Pg. 92

Pg. 93

Pg. 94

Pg. 95

Pg. 95

Pg. 96

Pg. 97

Pg. 97

Pg. 97

Pg. 98

Pg. 99

Pg. 99

Pg. 99

Pg. 99

Pg. 99

Pg. 99

Pg. 100

The Fastener Specialist

Your Construction Supply Specialist

Reg Number: 2018/378047/07 (Pty.Ltd)



IRB

Fasteners



**Set Screw Grade 4.8
Black DIN 558**



**Set Screw Grade 4.8
Zinc Plated DIN 558**



**Set Screw Grade 4.8
HDG DIN 558**



**Set Screw Grade 8.8
Black DIN 933**



**Set Screw Grade 8.8
Zinc Plated DIN 933**



**Set Screw Grade 8.8
HDG DIN 933**



**Set Screw Grade 10.9
Black DIN 933**



**Set Screw Grade 304
Stainless Steel DIN 933**



**Set Screw Grade 316
Stainless Steel DIN 933**



**Bolt Grade 4.8
Black DIN 601**



**Bolt Grade 4.8
Zinc Plated DIN 601**



**Bolt Grade 4.8
HDG DIN 601**



**Bolt Grade 8.8
Black DIN 931**



**Bolt Grade 8.8
Zinc Plated DIN 931**



**Bolt Grade 8.8
HDG DIN 931**



**Bolt Grade 10.9
Black DIN 931**



**Bolt Grade 304
Stainless Steel DIN 931**



**Bolt Grade 316
Stainless Steel DIN 931**



**High Speed Friction Grip Bolt
Grade 8.8 Black DIN 6914**



**High Speed Friction Grip Bolt
Grade 8.8 Zinc Plated DIN 6914**



**High Speed Friction Grip Bolt
Grade 8.8 HDG DIN 6914**



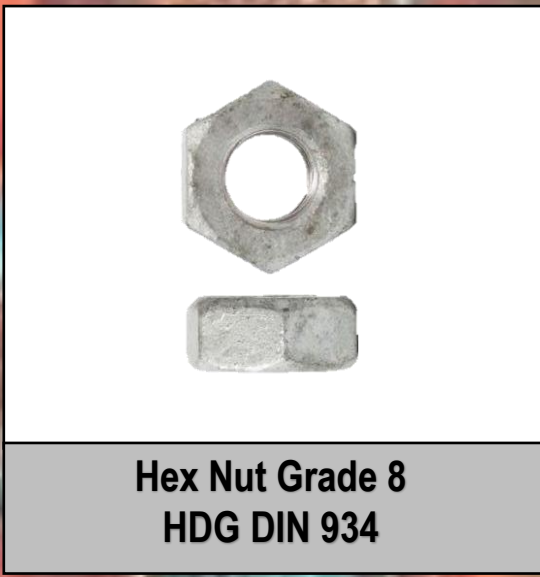
**High Speed Friction Grip Bolt
Grade 10.9 Black DIN 6914**



**High Speed Friction Grip Bolt
Grade 10.9 Zinc Plated DIN 6914**



**High Speed Friction Grip Bolt
Grade 10.9 HDG DIN 6914**





**Hex Nut Grade 10
Black DIN 934**



**Hex Nut Grade 304
Stainless Steel DIN 934**



**Hex Nut Grade 316
Stainless Steel DIN 934**



**Nyloc Nut
Zinc Plated DIN 985**



**Nyloc Nut Grade 304
Stainless Steel DIN 985**



**Nyloc Nut Grade 316
Stainless Steel DIN 985**



**Dome Nut
Nickel Plated DIN 1578**



**Dome Nut Grade 304
Stainless Steel DIN 1578**



**Dome Nut Grade 316
Stainless Steel DIN 1578**



**Hex Coupling Nut
Zinc Plated**



**Hex Coupling Nut
Grade 304 Stainless Steel**



**Hex Coupling Nut
Grade 316 Stainless Steel**



**Spring Nut
Zinc Plated**



**Flange Nut
Yellow Zinc DIN 6923**



**Flange Nut
HDG DIN 6923**



**Wing Nut
Zinc Plated DIN 315**



**Wing Nut Grade 304
Stainless Steel DIN 315**



**Wing Nut Grade 316
Stainless Steel DIN 315**



**Half Lock Nut
Zinc Plated DIN 439**



**Cleveloc Nut
Yellow Zinc DIN 980**



**Weld Nut
Black DIN 928**



**Flat Washer
Black DIN 126**



**Flat Washer
Zinc Plated DIN 126**



**Flat Washer
HDG DIN 126**



**Flat Washer Grade 304
Stainless Steel DIN 126**



**Flat Washer Grade 316
Stainless Steel DIN 126**



**Flat Washer
Brass DIN 126**



**Fender Washer
Zinc Plated**



**Fender Washer Grade 304
Stainless Steel**



**Fender Washer Grade 316
Stainless Steel**



**Through Hardened Washer
Black DIN 6916**



**Through Hardened Washer
Zinc Plated DIN 6916**



**Through Hardened Washer
HDG DIN 6916**



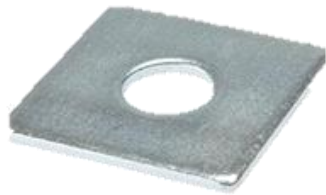
**Spring Washer
Zinc Plated DIN 7980**



**Spring Washer Grade 304
Stainless Steel DIN 7980**



**Spring Washer Grade 316
Stainless Steel DIN 7980**



**Square Washer
Zinc Plated DIN 436**



**Taper Washer
Black DIN 435**



**Taper Washer
HDG DIN 436**



**Internal Serrated Lock Washer
Zinc Plated DIN 6798J**



**External Serrated Lock Washer
Zinc Plated DIN 6798A**



**Serrated Lock Washer
Zinc Plated DIN 25201**



**Threaded Rod Grade 4.8
Mild Steel Black**



**Threaded Rod Grade 4.8
Mild Steel Zinc Plated**



**Threaded Rod Grade 4.8
Mild Steel HDG**



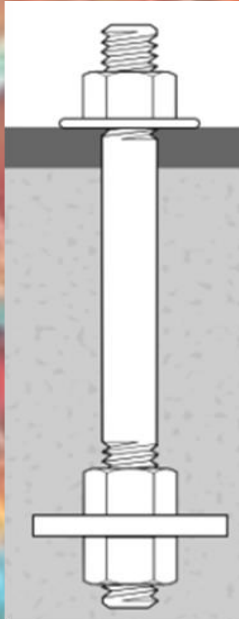
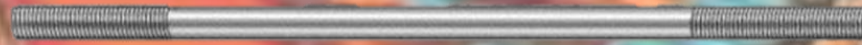
**Threaded Rod Grade EN8
High Tensile Black**



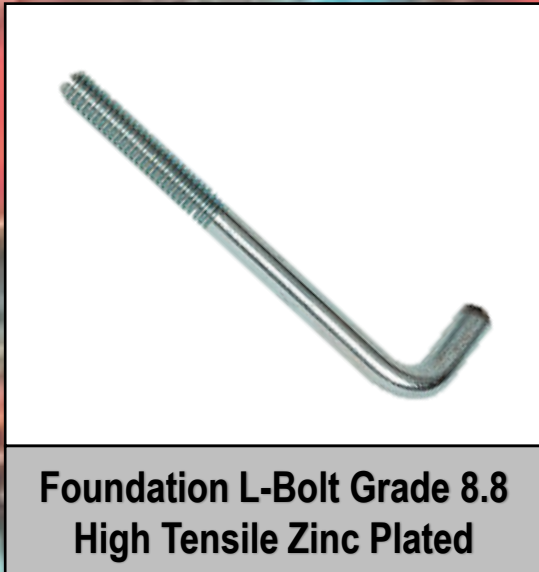
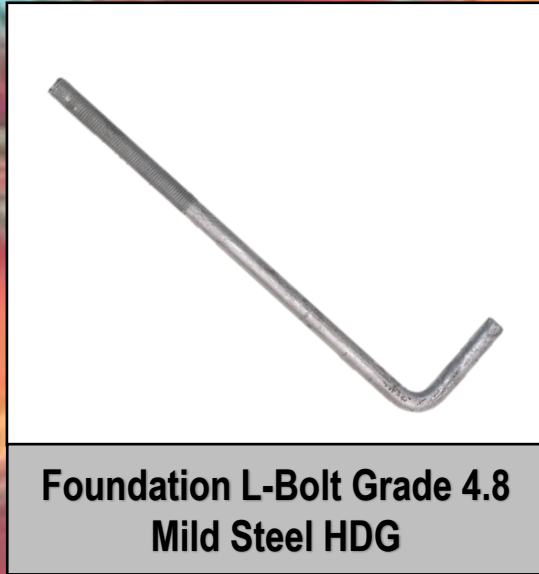
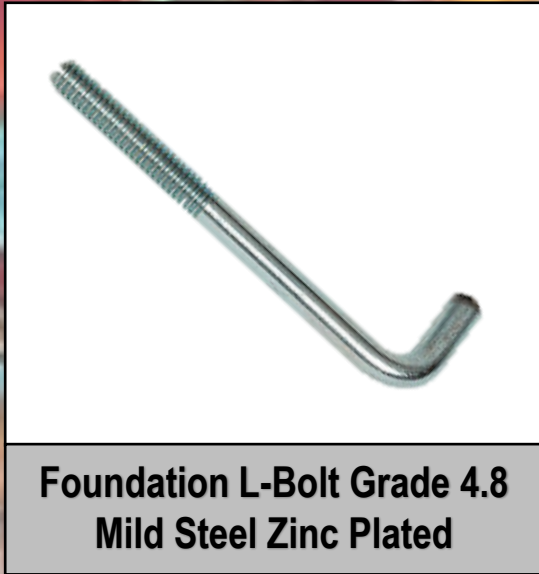
**Threaded Rod Grade EN8
High Tensile Zinc Plated**



**Threaded Rod Grade EN8
High Tensile Black**



TFS Holding Down Bolts			
Item Code	Product Description	Qty	
	Customised Made To Size As Per Drawing		
	Comes standard with 3 Nuts + 1 Washer + Plate Unless Stated Otherwise As Per Drawing		
	Material Type: Grade 4.8 Mild Steel Grade 8.8 High Tensile Grade 304 Stainless Steel Grade 316 Stainless Steel		
	Coating Type: Black Zinc Plated HDG Stainless Steel		





**Pig Tails Grade 4.8
Mild Steel Black**



**Pig Tails Grade 4.8
Mild Steel Zinc Plated**



**Pig Tails Grade 4.8
Mild Steel HDG**



**U-Bolts Grade 4.8
Mild Steel Black**



**U-Bolts Grade 4.8
Mild Steel Zinc Plated**



**U-Bolts Grade 4.8
Mild Steel HDG**



**U-Bolts Grade 304
Stainless Steel**



**U-Bolts Grade 316
Stainless Steel**



**Hook Bolt Grade 4.8
Mild Steel Zinc Plated**



**Hook Bolt Grade 4.8
Mild Steel HDG**



**Eye Bolt Grade 4.8
Zinc Plated**



**Eye Bolt Grade 4.8
HDG**



**Forged Eye Nut
Zinc Plated**



**Forged Eye Nut Grade 304
Stainless Steel**



**Forged Eye Nut Grade 316
Stainless Steel**



**Forged Eye Bolt
Zinc Plated**



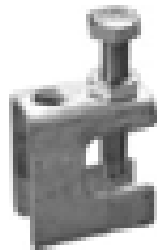
**Forged Eye Bolt
HDG**



**Forged Eye Bolt
Stainless Steel**



**Purlin Buckle with Welded Nut
Zinc Plated**



**G-Clamp
Zinc Plated**



**Articulated G-Clamp
Zinc Plated**



**Beam Clamp
Zinc Plated**



**Angle Cleats
Zinc Plated**



**TFS Strap Tensioner
Zinc Plated**



**TFS Wedge Anchor
Zinc Plated**



**TFS Wedge Anchor Grade 304
Stainless Steel**



**Non-Genuine Shield Anchor
With Loose Bolt Yellow Zinc**



**TFS Sleeve Anchor
Yellow Zinc**



**TFS Sleeve Anchor Grade 304
Stainless Steel**



**TFS Drop In Anchor
Zinc Plated**



**TFS Drop In Anchor Grade 304
Stainless Steel**



**TFS Metal Nail In Anchor
Zinc Plated**



**TFS Nylon Nail In Anchor
Yellow Zinc**



**TFS Nylon Nail In Anchor
Grade 304 Stainless Steel**



**TFS Pan Anchor
Zinc Plated**



**TFS Basin Anchor
Zinc Plated**



**TFS Nylon Plug wit Hook, Eye
Zinc Plated**



**TFS Nylon Frame Fixing
Yellow Zinc**



**TFS Tie Wire Anchor
Yellow Zinc**



**TFS Plug
Nylon**



**TFS Wall Plug
Plastic**



**TFS Coach Screw
Zinc Plated**



**TFS Coach Screw Grade 304
Stainless Steel**



**TFS EPDM Bonded Washers
Zinc Plated**



**TFS EPDM Bonded Washers
Aluminium**



**TFS Hex Head Tek Screw
Self Drilling Yellow Zinc**



**TFS Hex Head Tek Screw
Self Drilling Class 3**



**TFS Hex Head Tek Screw
Self Drilling Class 4**



**TFS Hex Head Tek Screw
Self Drilling Grade 304 Stainless Steel**



**TFS Hex Head Tek Screw
Self Drilling Fine Thread Class 3**



**TFS Hex Head Tek Screw
Self Drilling Stitching Yellow Zinc**



**TFS Hex Head Tek Screw
Self Drilling Stitching Class 3**



**TFS Hex Head Tek Screw
Self Drilling Stitching Class 4**



**TFS Hex Head Type 17 Screw
Yellow Zinc**



**TFS Hex Head Type 17 Screw
Class 3**



**TFS Hex Head Type 17 Screw
Class 4**



**TFS CSK Wing Tek Screw
Pozi Zinc Plated**



**TFS Wafer Head Tek Screw
Pozi Course Thread Yellow Zinc**



**TFS Wafer Head Tek Screw
Pozi Fine Thread Yellow Zinc**



**TFS Wafer Head Tek Screw
Pozi Fine Thread Class 3**



**TFS Pan Head Tek Screw
Pozi Zinc Plated**



**TFS American Wafer Head Screw
Pozi Coarse Thread Zinc Plated**



**TFS Wafer Head Type 17 Screw
Pozi Coarse Thread Zinc Plated**



**TFS CSK Self Tapping Screw
Pozi Zinc Plated**



**TFS CSK Self Tapping Screw
Pozi Grade 304 Stainless Steel**



**TFS CSK Self Tapping Screw
Pozi Grade 316 Stainless Steel**



**TFS Pan Self Tapping Screw
Pozi Zinc Plated**



**TFS Pan Self Tapping Screw
Pozi Grade 304**



**TFS Pan Self Tapping Screw
Pozi Grade 316**



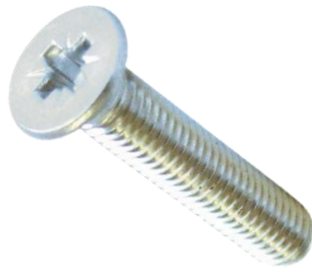
**TFS Screw Plug
Nylon**



**TFS Screw Plug
Metal**



**TFS CSK Machine Screw
Pozi Zinc Plated**



**TFS CSK Machine Screw
Pozi Grade 304 Stainless Steel**



**TFS CSK Machine Screw
Pozi Grade 316 Stainless Steel**



**TFS Pan Head Machine Screw
Pozi Zinc Plated**



**TFS Pan Head Machine Screw
Pozi Grade 304 Stainless Steel**



**TFS Pan Head Machine Screw
Pozi Grade 316 Stainless Steel**



**TFS Cheese Head Machine Screw
Slotted Zinc Plated**



**TFS Cheese Head Machine Screw
Slotted Grade 304 Stainless Steel**



**TFS Cheese Head Machine Screw
Slotted Grade 316 Stainless Steel**



**TFS Spring Toggle
Zinc Plated**



**TFS Spring Toggle with Screw
Zinc Plated**



**TFS Spring Toggle with Hook, Eye
Zinc Plated**



**TFS Chipboard Screw
Pozi Yellow Zinc**



**TFS Chipboard Screw
Square Drive Yellow Zinc**



**TFS Chipboard Screw
Pozi Grade 304 Stainless Steel**



**TFS Decking Screw
Class 3**



**TFS Decking Screw
Grade 304 Stainless Steel**



**TFS Drywall Tek Screw
Fine Thread Black**



**TFS Drywall Screw
Fine Thread Black**



**TFS Drywall Screw
Coarse Thread Black**



**Pop Rivet
Aluminium**



**Black Pop Rivet
Aluminium**



**White Pop Rivet
Aluminium**



**Green Pop Rivet
Aluminium**



**Yellow Pop Rivet
Aluminium**



**Red Pop Rivet
Aluminium**



**Blue Pop Rivet
Aluminium**



**Countersunk Pop Rivet
Aluminium**



**Sealed Pop Rivet
Aluminium**



**Large Flange Pop Rivet
Aluminium**



**Washer for Pop Rivet
Aluminium**



**TFS Concrete Nails
Zinc Plated**



**TFS Round Wire Nails
Zinc Plated**



**Flute Nails
Zinc Plated**



**Clout Nails
Zinc Plated**



**Panel Pins
Self Colour**

The Fastener Specialist

Your Construction Supply Specialist

Reg Number: 2018/378047/07 (Pty.Ltd)



Grouts &

Bonding Agents

TFS Balu-Grout 25kg

Product Description

Balu-Grout is a rapid setting highly flowable cementitious based, high-strength, non-shrink and non-metallic mix designed for high performance grouting applications where ease of placement, fast setting time and suitability for use under high load and where vibration resistance are important.

Chemical Base

- Specially selected cementitious blends
- Non-shrink additives
- Water-reducing additives
- Graded siliceous aggregates
- Other chemical reagents which enhance the total performance of the grout

Characteristics/Advantages

- Easy to use (just add clean water)
- Non-corrosive (will not attack reinforcement)
- Non-metallic
- Non-bleeding
- Excellent adhesion
- Excellent high early and initial strengths
- Very good flow characteristics
- Non-shrinking
- Fast-setting

Typical Uses

- Anchoring of Balustrading Posts to concrete
- Grouting of Glass balustrades into concrete
- Grouting: anchor bolts & starter bars
- Bedding: machine bases, column base plates, crane rails
- Concrete Repairs: grouting cavities and voids in concrete

TFS Cem-Grip Bonding Agent

Item Code	Product Description	Qty	
CEMGRIP5L	TFS Polymer Based Cement Grip Bonding Agent with Waterproofing Properties	5L	
CEMGRIP20L	TFS Polymer Based Cement Grip Bonding Agent with Waterproofing Properties	20L	
CEMGRIP200L	TFS Polymer Based Cement Grip Bonding Agent with Waterproofing Properties	200L	
CEMGRIP1000L	TFS Polymer Based Cement Grip Bonding Agent with Waterproofing Properties	1000L	

Cem-Grip Bonding Agent

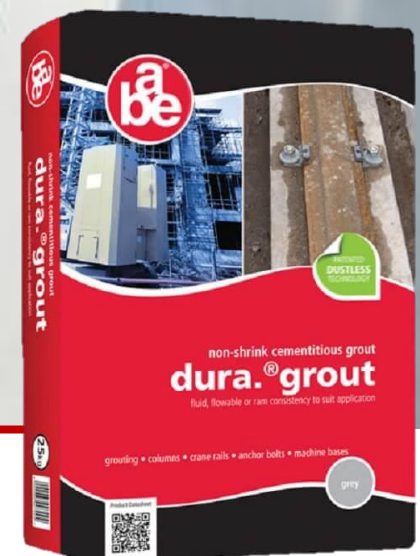
- Cement Grip is a universal polymer based bonding liquid, for many plaster binding applications, including gypsum plasterboard. Covers +/- 10m²/Litre

Applications:

- Ripple coat application-prepare surfaces with a ripple coat consisting 2-parts of river sand, 1-part cement and 1-part Cement Grip. Apply with a brush, trowel or tyraline tool.
- Waterproofing and bonding of cement-based plaster applications, Bonding Agent for tile adhesives.
- When gypsum-based plaster is used, apply the cement grip to the prepared surface and plaster straight onto the wet Cement Grip finishing off with a single operation.
- Cement Grip can be added to sand/cement plaster mix to obtain a stronger bond.
- Cement Grip can be applied with a brush or roller directly to a plastered surface.
- Apply onto brickwork surfaces to be plastered, apply plaster while surface is wet.



***NB* Other Products
On Special Request**



A.B.E Dura.grout

- Dura.®grout is a ready-for-use (merely add water) Portland cement-based grouting compound. It contains graded siliceous aggregate and chemical reagents which prevent shrinkage during curing

Applications:

- Consistency range at FLOWABLE, FLUID or RAM to suit application.
- Bedding: column base plates, machinery base plates, bearing plates, crane rails.
- Grouting: anchor bolts, cables, starter bars, top steel.
- Repairing: cavities in concrete.

Address

Shop 2&3, Delmont Centre,
North Reef Road, Corner Atlas Road,
Elandsfontein,
Johannesburg, Gauteng,
South Africa
1406

Contact Details:

Managing Director

Quinton Smit

+27(0) 82 895 5773

qsmit@fastenerspecialist.co.za

Operations Manager

Shane Smit

+27(0) 61 498 6394

ssmit@fastenerspecialist.co.za

Office

+27(0) 76 303 5130

admin1@fastenerspecialist.co.za

